

**Wellness First Back Support**

Combined with good body mechanics, this back support can help reduce injuries. Supports help the body control the forces encountered with lifting by providing firm support across the lower back and abdominal regions. Contoured design encourages the use of proper lifting techniques.

- |   |                   |
|---|-------------------|
| A) Extra Small (Waist/Hip - 22" to 27") | Order #: CH-45530 |
| B) Small (Waist/Hip - 28" to 32")       | Order #: CH-45531 |
| C) Medium (Waist/Hip - 33" to 38")      | Order #: CH-45532 |
| D) Large (Waist/Hip - 39" to 44")       | Order #: CH-45533 |
| E) Extra Large (Waist/Hip - 45" to 49") | Order #: CH-45534 |



**Saunders Posture S'Port**

Worn directly on the skin or over a T-shirt, the Posture S'Port discourages stooped shoulders and assists in proper spinal alignment with elastic straps. Under arm straps are covered with a soft cotton fabric for comfort. Waistband is adjustable.

- |                             |                    |
|-----------------------------|--------------------|
| A) Small (Waist 22" - 29")  | Order #: SA-25000S |
| B) Medium (Waist 30" - 42") | Order #: SA-25000M |
| C) Large (Waist 43" - 54")  | Order #: SA-25000L |

**Saunders Sacroiliac Belt**

This SI Belt has a unique non-slip surface and an effective, comfortable one step adjustment. The stabilization pad fits between sacral sulci and provides firmer support. Stabilization pad sold separately.

- |                           |                    |
|---------------------------|--------------------|
| A) Small (26" - 31" Hip)  | Order #: SA-0812S  |
| B) Medium (32" - 42" Hip) | Order #: SA-08122M |
| C) Large (43" - 52" Hip)  | Order #: SA-08122L |
| D) SI Stabilization Pad   | Order #: SA-08200R |



**IEM (SI) Lombo Pelvic Support**

This support is composed of three specific parts, two side straps and a trapezoidal-shaped sacral pad. The side straps are contoured in order to assure the desired forces around the pelvis and are lined with Sorbothane which minimizes upward riding and significantly maximizes the patients comfort. An interruption of the Sorbothane lining is provided anteriorly to supply relief to the lateral/femoral cutaneous nerve which under compression causes undesirable sensations in the lower extremities. Made from durable leather and suede. Available in waist sizes 32" to 48".

Order #: IEM-100



**Elcross Lumbo Sacral Support**

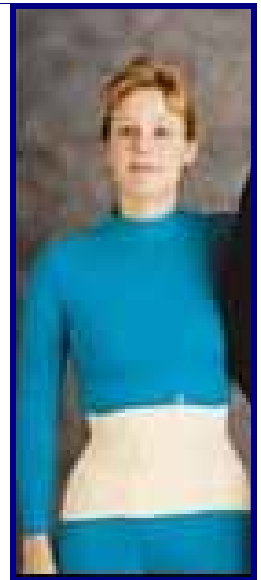
An Adjustable elastic back support for clients requiring moderate sacroiliac or lumbo sacral support. Lightweight, breathable, three-layer cotton/polyester blend stretch fabric conforms to the body's natural contours. Steele inserts may be shaped for extra rigidity. Secure elastic bands provide firm support and are fully adjustable for correct compression. Hook and loop straps fasten and release simply for ease of use. Machine washable.

- |                                     |                 |
|-------------------------------------|-----------------|
| A) Small (Hip 33.5" to 37.5")       | Order #: 668601 |
| B) Medium (Hip 37.5" to 41.5")      | Order #: 668602 |
| C) Large (Hip 41.5" to 45.5")       | Order #: 668603 |
| D) Extra Large (Hip 45.5" to 49.5") | Order #: 668604 |

**Elcross Sacral Support**

An adjustable elastic sacral support made from a three-layer cotton/polyester blend stretch fabric which conforms to the body's natural contours. Elastic cinch straps provide firm support and are fully adjustable for correct compression. Hook and look front enclosure fastens and releases simply for fast and easy use. Machine washable.

- |                                     |                 |
|-------------------------------------|-----------------|
| A) Small (Hip 33.5" to 37.5")       | Order #: 668501 |
| B) Medium (Hip 37.5" to 41.5")      | Order #: 668502 |
| C) Large (Hip 41.5" to 45.5")       | Order #: 668503 |
| D) Extra Large (Hip 45.5" to 49.5") | Order #: 668504 |



**Active S-I Belt**

A sacroiliac joint stabilizer. The double belt design includes a comfortable neoprene under-belt that flexes with movement and prevents slipping. An over-belt of sturdy nylon provides steady lateral compression. This belt reduces strain on S-I ligaments, decreases pain, and promotes faster healing.

- |                       |                 |
|-----------------------|-----------------|
| A) Small (26" - 33")  | Order #: 668400 |
| B) Medium (34" - 42") | Order #: 668401 |
| C) Large (43" - 52")  | Order #: 668402 |